



GAT MONTHLY MEMBERSHIP PROGRESS REPORT

Results as of: 6/30/2023

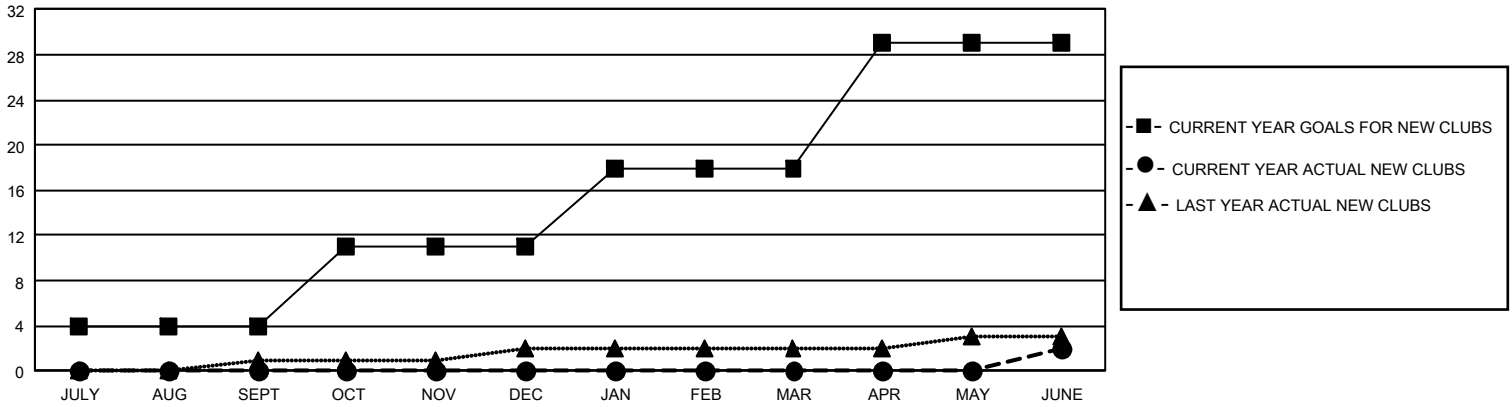
GMT Constitutional Area 1, Group E

REPORT DOES NOT INCLUDE CLUBS IN UNDISTRICTED AREAS.

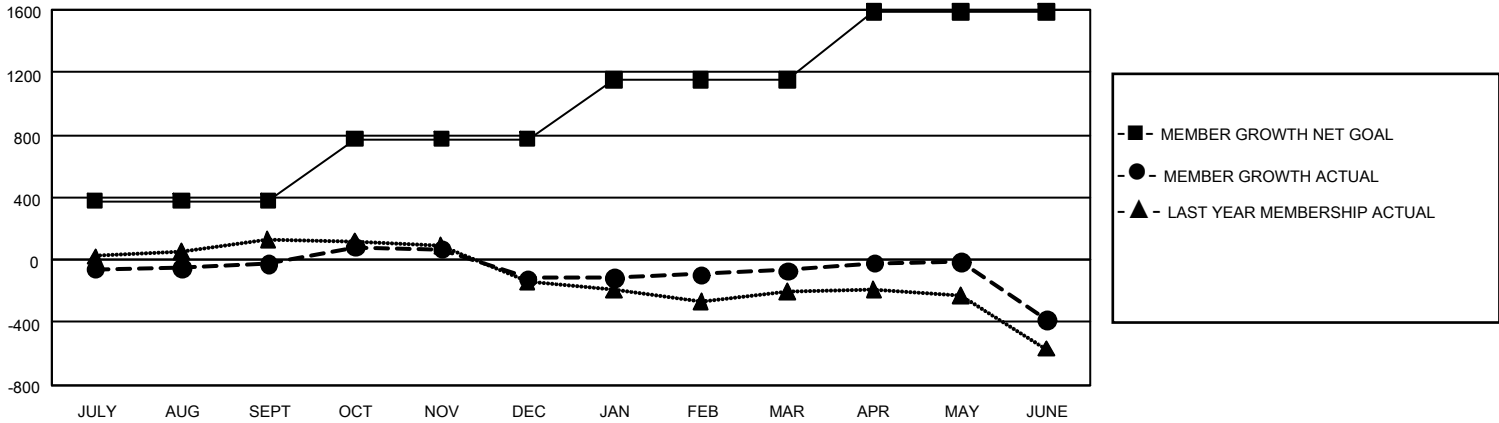
Clubs			
RESULTS FOR 2022-2023			
QUARTER	NEW CLUB GOAL	NEW CLUBS	DROPPED CLUBS
JULY/AUG/SEPT	12	0	5
OCT/NOV/DEC	21	0	2
JAN/FEB/MAR	21	0	1
APR/MAY/JUNE	33	2	6

Members			
RESULTS FOR 2022-2023			
QUARTER	MEMBER GROWTH NET GOAL	MEMBER GROWTH ACTUAL	DROPPED MEMBERS ACTUAL (including transfers)
JULY/AUG/SEPT	378	777	711
OCT/NOV/DEC	397	738	774
JAN/FEB/MAR	375	748	615
APR/MAY/JUNE	435	885	1,103

GOALS AND ACTUAL NEW CLUBS CUMULATIVE



GOALS AND ACTUAL MEMBERS CUMULATIVE



DROPPED CLUBS: 14	656 CLUBS OF 1,005 ADDED 1 OR MORE NEW MEMBERS	GENDER DISTRIBUTION	
		MALE 21,467 (71.01%) FEMALE 8,760 (28.98%) NON BINARY 0 (0.00%) PREFER NOT TO ANSWER 4 (0.01%)	
DROPPED MEMBERS		CLICK HERE FOR CUMULATIVE MEMBERSHIP DATA	TOTAL FAMILY UNIT MEMBERS 5,455
DECEASED 497 CLUB CANCELLED 86 OTHER 2,620 TOTAL 3,203	FAMILY MEMBERS PAYING HALF DUES 2,784		